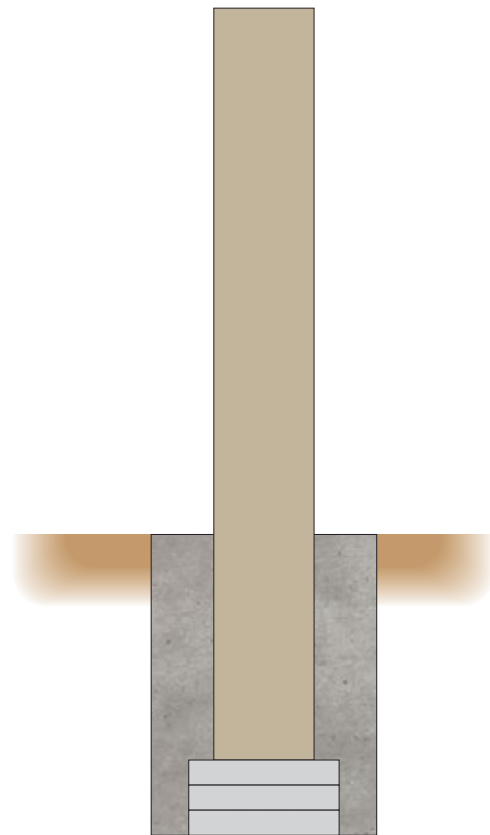


**SIGNAGE OVERVIEW - NOT TO SCALE**



ST-E01



ST-E02



ST-E03

**COLORS/FINISHES**



Match Brand Color  
SW 7011, Natural Choice

Match Brand Color  
PMS 648C

Match Brand Color  
PMS 202C

Match Exterior Wall  
??

**NOTES/OTHER**

File Name: Vineyard\_Park\_Mercer\_S08160\_ProductionPack

**RELEASE FOR PRODUCTION**

PROJECT MANAGER:

**CLIENT APPROVAL**

APPROVED AS-IS

APPROVED with Changes

**REVISE and RESUBMIT**

DATE: 12/17/2024

Please carefully review all contents contained herein. Your signature indicates approval of all stakeholders for materials, design, colors, spelling, sizes, and fabrication and installation methods including responsibility for errors and omissions. The client will hold Northwest Sign & Design harmless and will be responsible for compensation for changes or corrections made after approval. No work will be started without signed approval or an appropriate waiver from the client.

© 2023 NW Sign & Design, all rights reserved. These drawings are the property solely of NW Sign & Design and are not to be used or reproduced in any manner without prior written permission. Penalties of \$5,000 will be charged for each page of this drawing set and/or each instance of product designs that are displayed and/or produced with unlawfully used artwork.

**SO#: 8160**

**PROJECT OVERVIEW**

PAGE 1 of 5

**PROJECT:**  
Magnet D&D - Vineyard Park Mercer Is.

**CLIENT:**  
Magnet D & D

**CONTACT:**  
Kevin Carl

**INSTALL ADDRESS:**  
2959 76th Ave SE  
Mercer Island, WA 98040

**PROJECT MANAGER:**  
Shawn Hamilton

**SALES:**  
Shawn Hamilton

**DESIGNER:**  
N/A

**PRODUCTION DESIGNER:**  
Michael Wells

**DATE: 12/09/24**

REVISIONS

MW Production	12/09/24
MW R1	02/03/24

**FINAL FOR PRODUCTION**

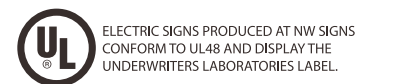


**NORTHWEST**

**SIGN & DESIGN**

17201 Beaton Rd. SE  
Monroe, WA 98272  
www.NWSigns.com  
(425) 844-6415

Contractors Lic#NWWHOS'g29M9



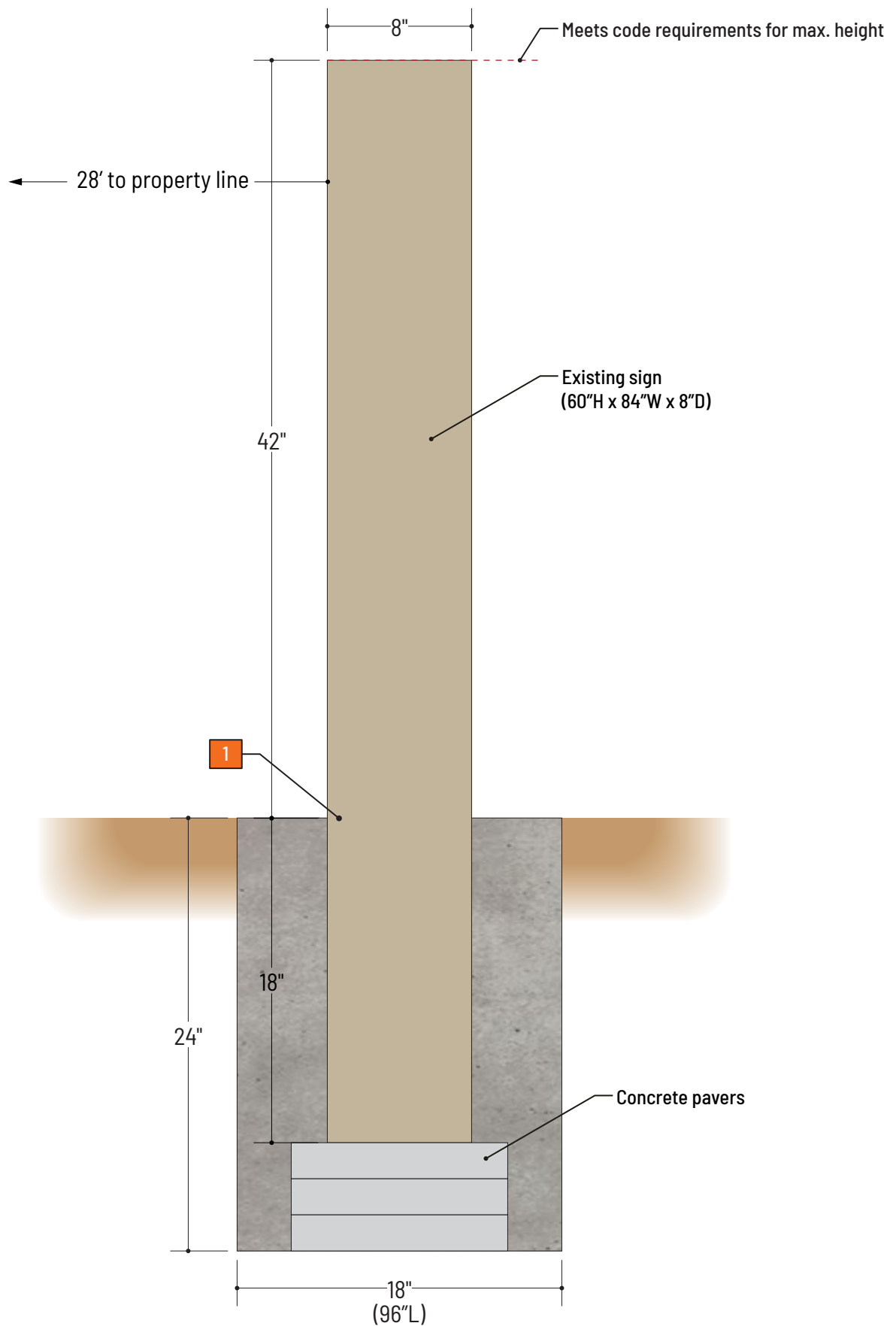
ST-E01 MONUMENT SIGN INSTALLATION Qty. 1



Existing Signage



Proposed Final Design



- 1 - Installation of existing sign into new concrete footing, leaving 42" of existing sign exposed above grade. Use concrete pavers to achieve specified position

Note: Assumes plants are removed and ground is leveled prior to NWS arrival. Assumes just in time delivery to site, by others. Boulders supplied and installed by others

Side / Section View

SCALE: 1" = 1'

**ST-E02**  
**WALL LOGO SIGN**  
Qty. 1

**COLOR SUMMARY**

**PAINT**

**A**   
MP TO MATCH PMS 648C  
SATIN FINISH

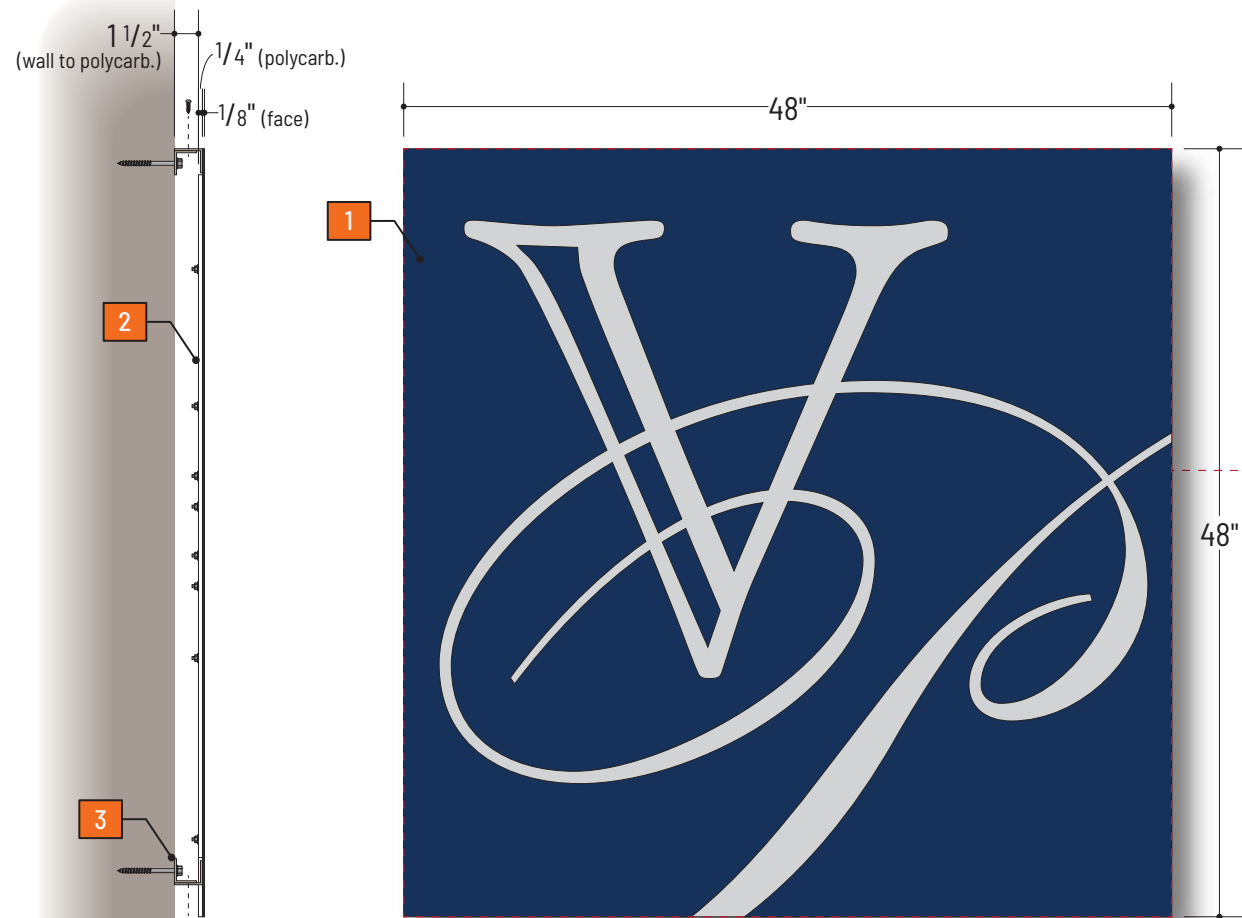
**B**   
MP TO MATCH EXT. WALL  
(??)  
SATIN FINISH

- 1** - 1/8" aluminum face, routed and painted **A**. 1 1/2" x 1 3/4" aluminum angle tack welded to reverse side for wall mounting, painted **B** to match wall color
- 2** - 1/4" clear polycarbonate backer, lowered at top and notched in lower corners to accomodate recessed angle, mounted to aluminum face with studs and VHB
- 3** - Layered assembly installs to wall using aluminum angle cleats. Cleats will install to wall using 3/8" x 3 1/2" long (min.) non-corrodible lag bolts (min. qty. x2 at top / min. qty. x2 at bottom). Sign face will secure to wall cleats using non-corrodible #10 cap head screws thru top/bottom returns. Min. qty. x4 at top and min. qty. x4 at bottom

Sign Area: 16 sq/ft

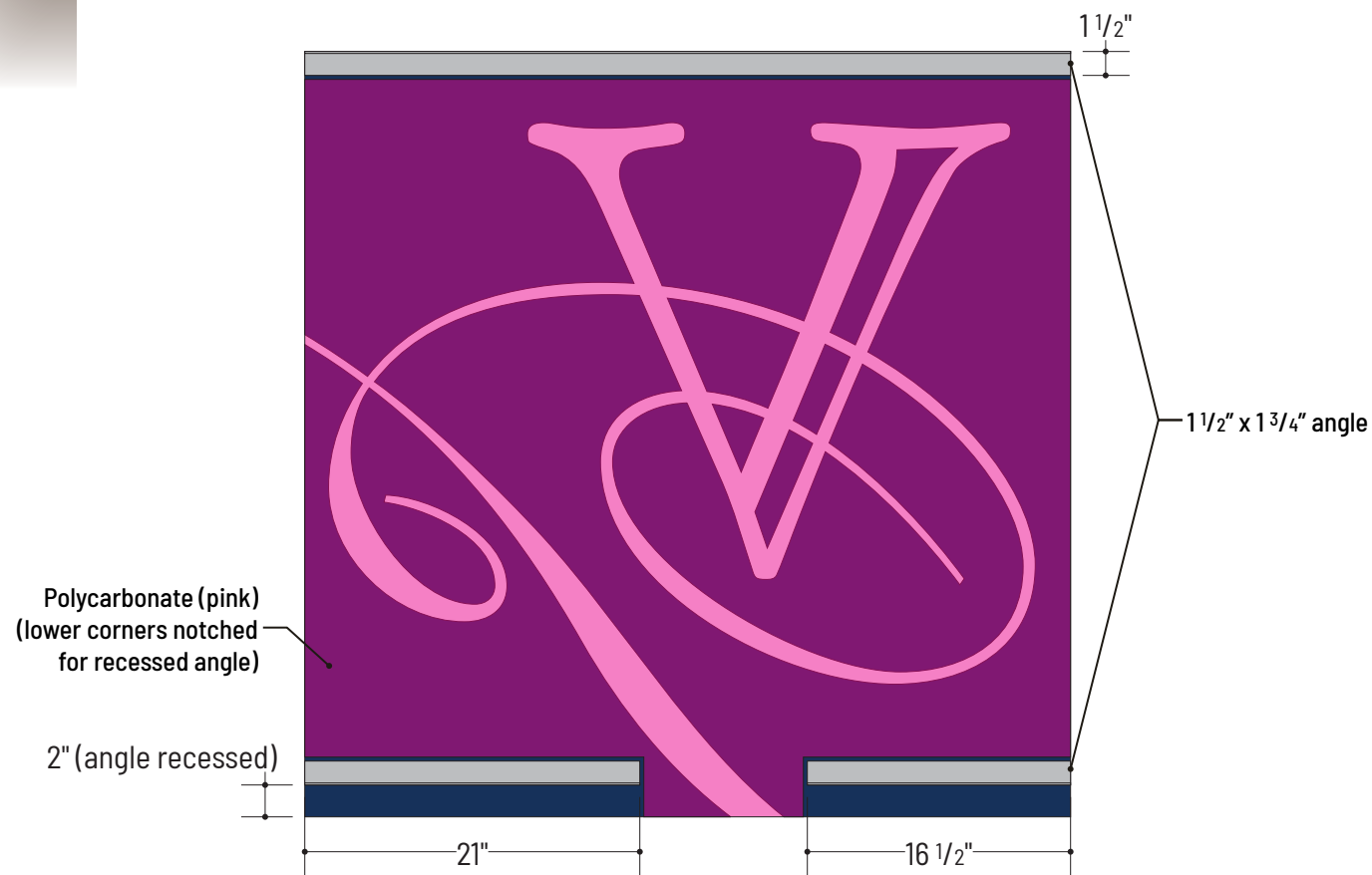


Proposed Install Location - Details Pending Survey



Front View

Side View



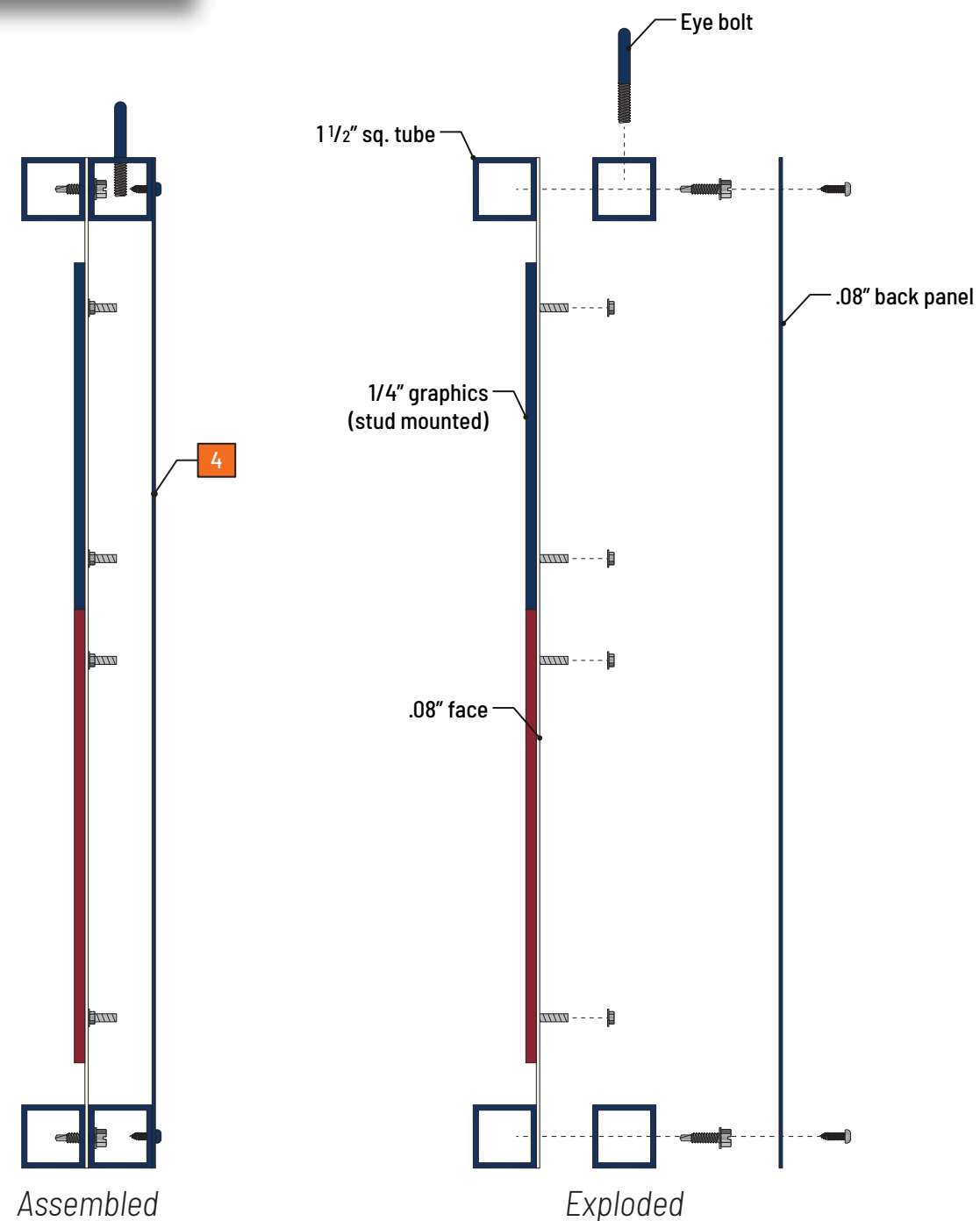
Back View



Side View Front View

- 1 - .08" aluminum panel painted **A** and secured between front and back frames. Outside visible edge of panel will be painted to match frames
- 2 - Fabricated 1 1/2" sq. tube aluminum frames painted **B**, sandwich either side of face panel and secured with mechanical fasteners
- 3 - 1/4" aluminum graphics/copy masked and painted **A B C**, mounted to face with studs and VHB
- 4 - .08" aluminum back panel painted **B** and secured with mechanical fasteners painted to match
- 5 - Eye bolts (x2) painted **B**, are secured to rear frame top return

Note: Fabrication and delivery, no installation



Side / Section View - 3" = 1'

SO#: 8160

PRODUCTION  
PACK

PAGE 4 of 5

SINGLE-FACE  
NON-ILLUMINATED

SCALE: 1" = 1'

**ST-E03**  
**HANGING SIGN**  
**Qty. 1**

**COLOR SUMMARY**

**PAINT**

**A**   
MP TO MATCH SW 7011,  
NATURAL CHOICE  
SATIN FINISH

**B**   
MP TO MATCH PMS 648C  
SATIN FINISH

**C**   
MP TO MATCH PMS 202C  
SATIN FINISH



**NORTHWEST**  
SIGN & DESIGN

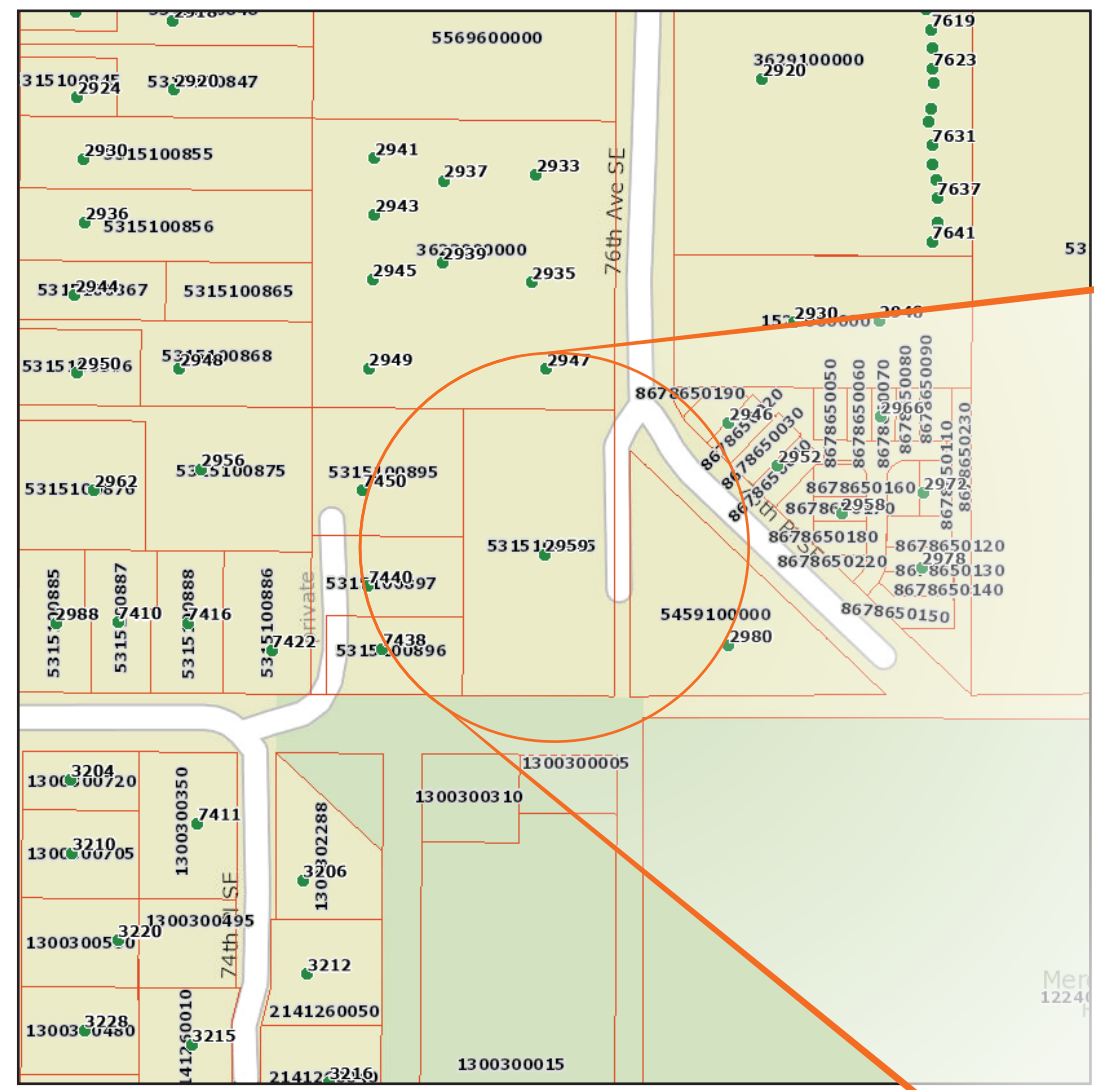
©2023 NW Sign & Design, all rights reserved.



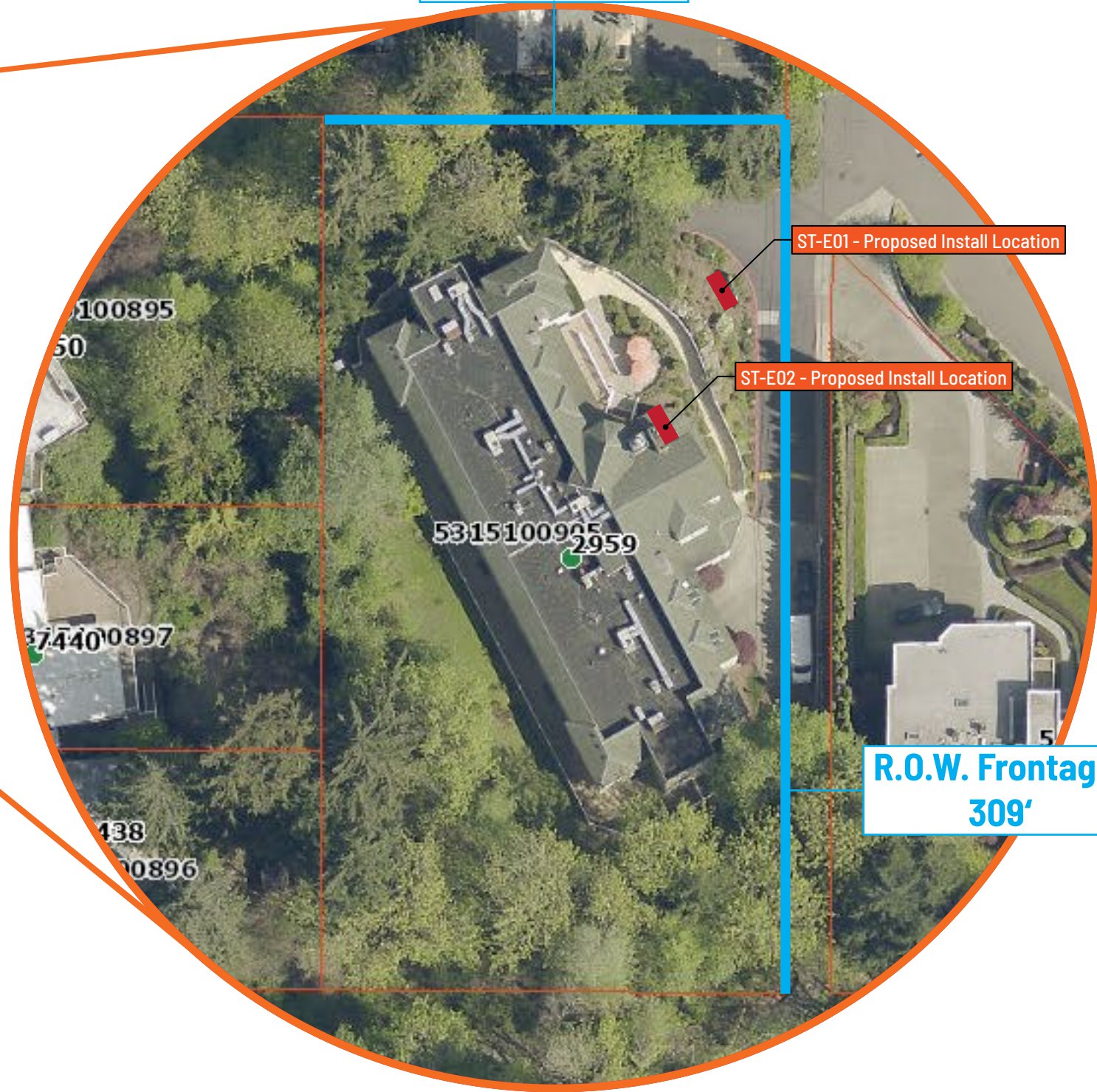
SO#: 8160

SITE PLAN

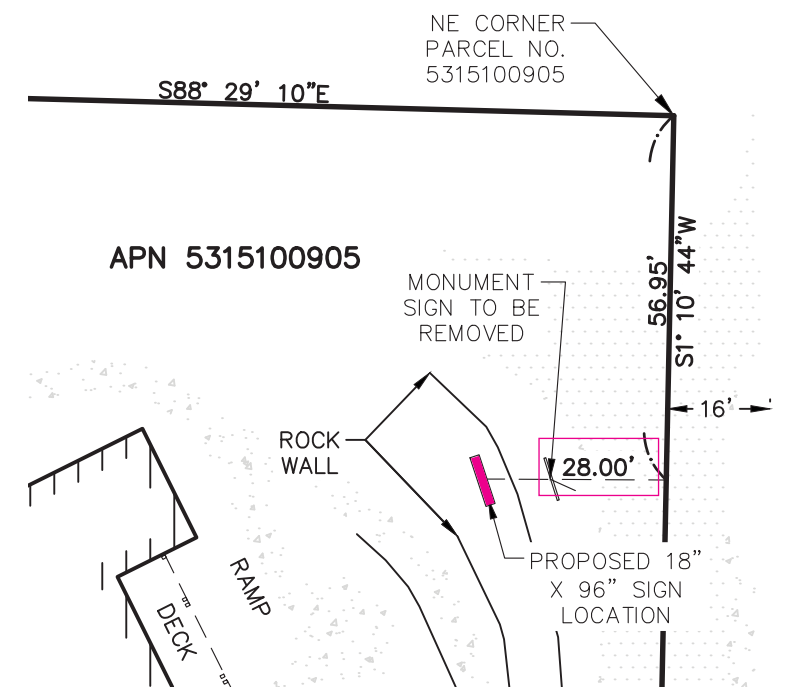
VINEYARD PARK - MERCER ISLAND  
ADDRESS:  
2959 76th Ave SE  
Mercer Island, WA 98040  
PARCEL:  
5315100905  
ZONING:



R.O.W. Frontage:  
157'



R.O.W. Frontage:  
309'



ST-E02 Placement - Property Line - No Scale